

DF Type 55 (C578)

PARTS CATALOG

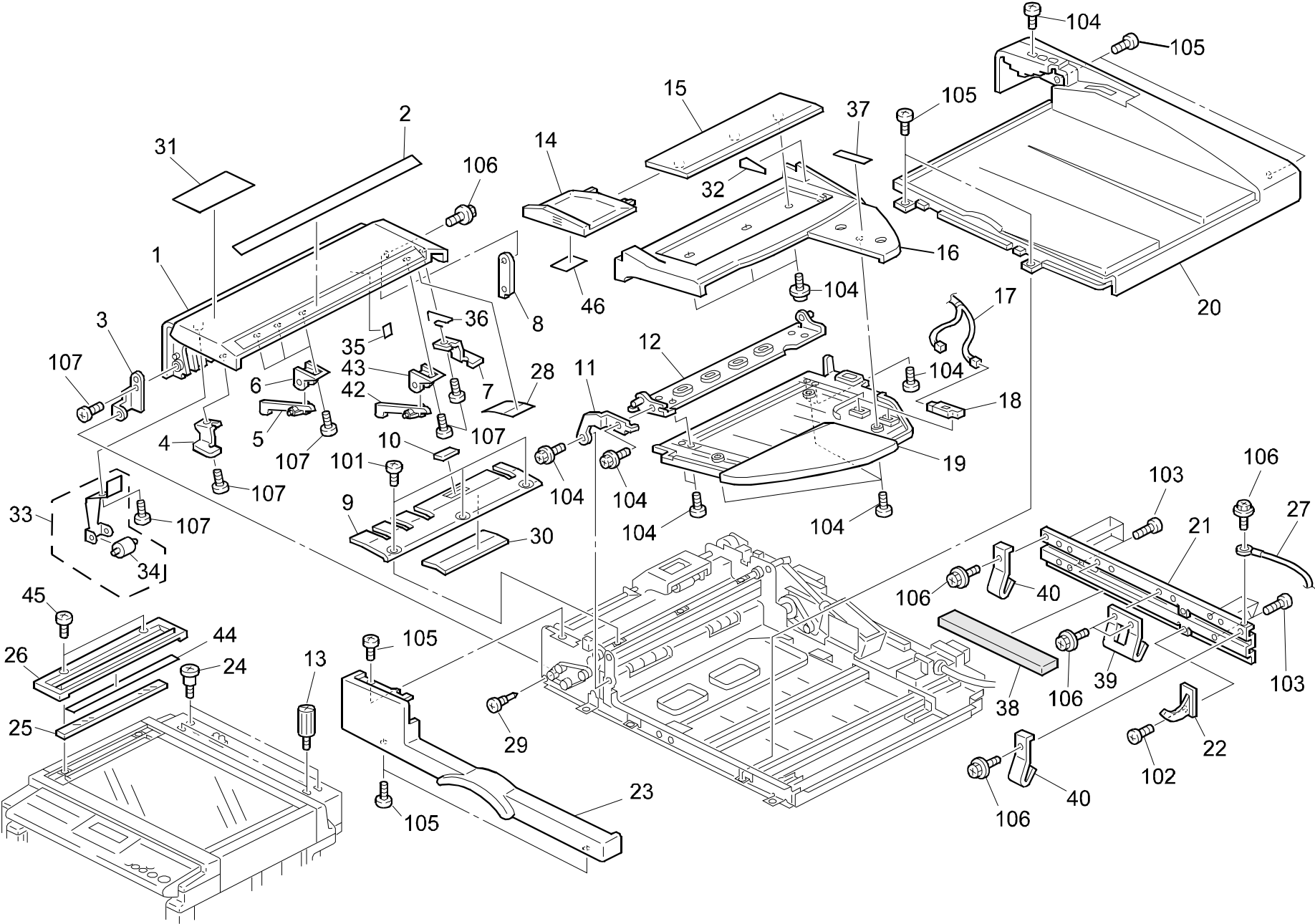
INTRODUCTION

This chapter instructs you the numbers and names of parts on this machine.

INDEX to PARTS CATALOG

1.Exterior (C578)	2
2.Paper Feed Unit (C578)	4
3.Paper Exit Section (C578)	6
4.Electrical Section (C578)	8
5.Decal And Document (C578).....	10
Parte Index	13

1.Exterior (C578)

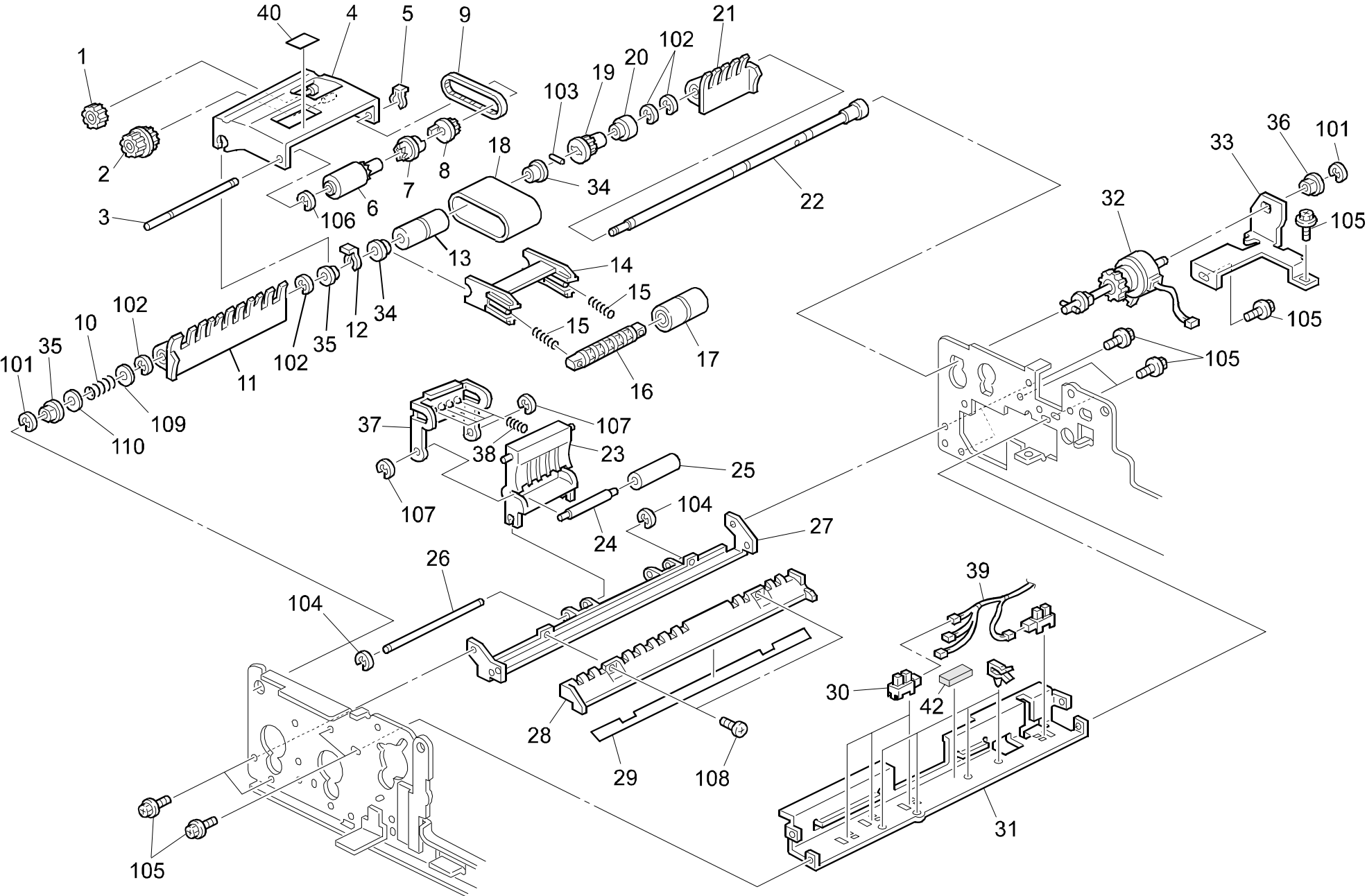


1.Exterior (C578)

Index No.	Part No.	Description	Q'ty Per Assembly
1	A628 2131	Left Cover	1
2	A628 6021	Original Size Decal	1
3	A628 2174	Front Cover Hinge	1
4	A628 2176	Front Magnet Catch	1
5	A628 2177	Feeler - Paper Size Detection	1
6	A628 2178	Feeler Bracket - Paper Size Detecti	1
7	A628 2175	Rear Magnet Catch	1
8	A628 2171	Fixing Bracket - Left Cover	1
9	A628 1261	Original Entrance Guide	1
10	A628 1262	Pad - Original Entrance Guide	1
11	A628 2167	Fixing Bracket - Original Table	1
12	A628 2163	Original Table Bracket	1
13	A628 3115	Knob Screw - M4	1
14	A565 2161	Side Fence	1
15	A628 2151	Side Fence Guide	1
16	A628 2141	Original Table	1
17	A628 5730	Relay Harness - Original Length Sensor	1
18	AW01 0074	Photo Refiection Sensor:PS-R11D1-E	1
19	A628 2161	Original Table Cover	1
20	A628 2121	Upper Cover	1
21	A661 1173	Bracket:hinge	1
22	A565 1172	Sensor Actuator	1
23	A628 2111	Front Cover	1
24	A628 3111	Shoulder Screw - M5	1
25	AC01 3004	Exposure Glass	1
26	A628 3192	Original Scale - LT	1
27	C229 5276	Ground Wire:Bracket:Hinge:Ass'y	1
28	A628 2211	Rear Guide Plate	1
29	5446 2824	Screw - Duplex Guide Plate	1
30	A628 1251	Anti-vibration Weight	1
31	A628 6031	Jam Removal Decal	1
32	A628 6041	Decal - Original Tray	1
33	A628 2186	Driven Roller - Pull Out	1
34	A628 2188	Rear : Spring Plate : Pull Out	1
35	A628 2179	Registration Sensor Shield	1

Index No.	Part No.	Description	Q'ty Per Assembly
36	A628 2170	Clock Lever - Left Cover	1
37	A610 6051	Decal - Document Set	1
38	A628 1178	Df Baracket Cushion	1
39	A628 1174	Right Ground Palte - Hinge Bracket	1
40	A628 1177	Left Ground Plate - Hinge Bracket	1
42	A661 2173	Feeler - Original Feed	1
43	A661 2172	Bracket - Feeler Original	1
44	A628 3112	Shielding Sheet	1
45	A193 1759	Stepped Sctew	1
46	A376 4599	Side Fence Pad	1
101	0353 0060F	Philips Truss Head Screw - M3x6	
102	0314 0060B	Philips Pan Head Screw - M4x6	
103	0434 0122B	Tapping Screw - M4x12	
104	0453 3006Z	Tapping Screw - M3x6	
105	0802 5255	Tapping Screw - M3x8	
106	0451 3006B	Tapping Screw - M3x6	
107	0452 3008	Tapping Bind Screw - M3x8	

2.Paper Feed Unit (C578)

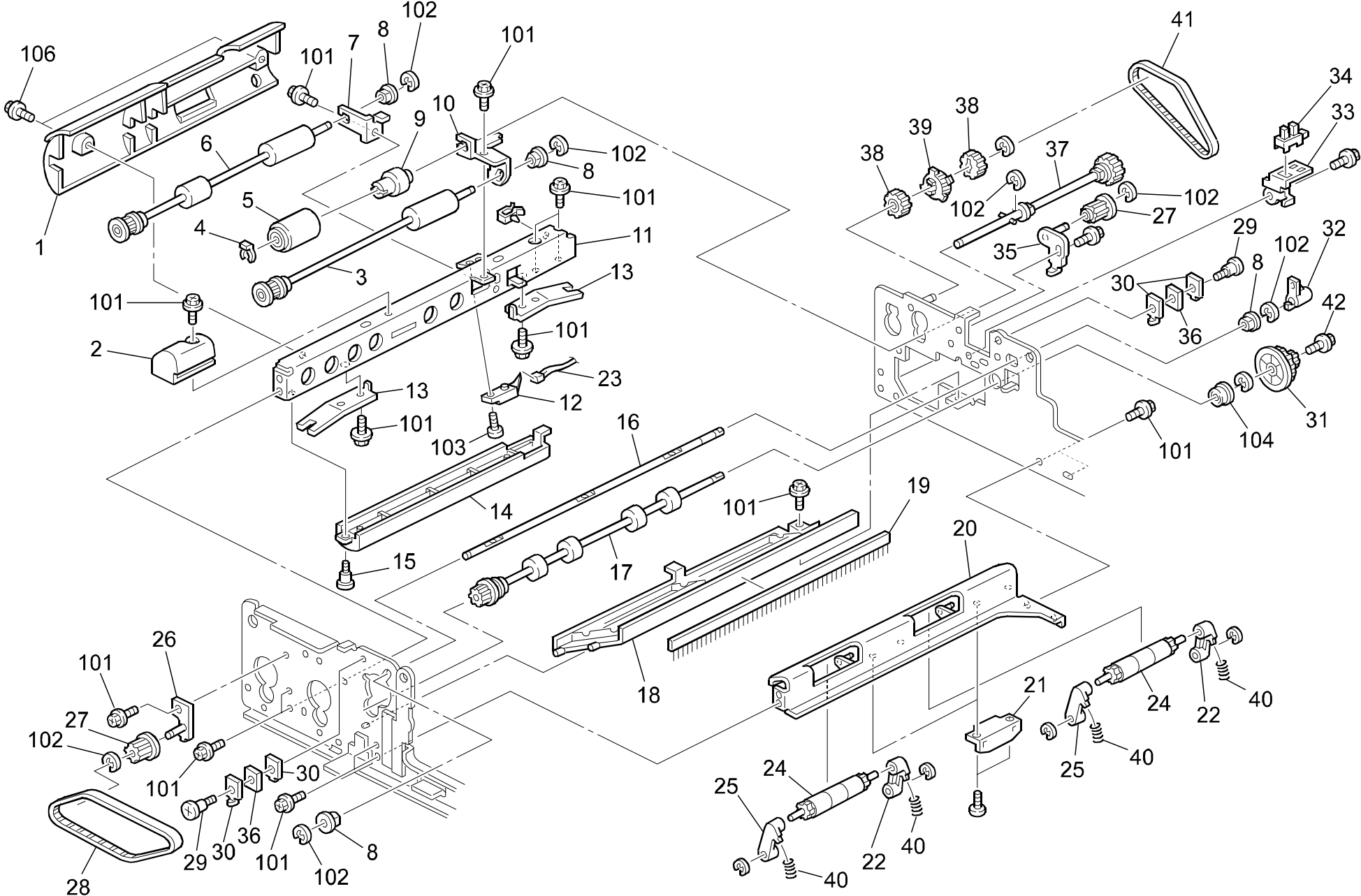


2.Paper Feed Unit (C578)

Index No.	Part No.	Description	Q'ty Per Assembly
1	A628 1246	Gear - 22Z	1
2	A628 1245	Pulley And Gear - 20T/22Z	1
3	A628 1242	Pick-up Roller Shaft	1
4	A628 1243	Pick-up Roller Holder	1
5	5206 2686	Snap Ring	1
6	A628 1241	Pick-up Roller	1
7	A628 1249	Joint - Pick-up Roller	1
8	A628 1244	Pulley - 20T	1
9	A628 1248	Timing Belt - 118MM	1
10	A628 1216	Spring - Belt Drive Shaft	1
11	A628 1218	Front Guide Plate	1
12	5215 2621	Snap Ring - M6	1
13	A628 1214	Belt Drive Roller	1
14	A628 1211	Holder - Belt Drive Roller	1
15	A628 1215	Spring - Belt Guide Roller	1
16	A628 1212	Shaft - Belt Guide Roller	1
17	A628 1213	Belt Guide Roller	1
18	A628 1257	Original Feed Belt	1
19	A628 1221	Gear - 22Z	1
20	A628 1220	Bushing - 8mm	1
21	A628 1219	Rear Guide Plate	1
22	A628 1222	Drive Roller Shaft	1
23	A628 1594	Left Transport Roller Holder	1
24	A628 1591	Left Transport Roller Shaft	1
25	A628 1592	Left Transport Roller	1
26	A628 1184	Shuft - Pull Out Roller	1
27	A628 1181	Lower Right Stay	1
28	A628 1187	Lower Transport Guide	1
29	A628 1188	Seal - Lower Transport Guide	1
30	AW02 0075	Photointerrupter	1
31	A628 1161	Upper Stay	1
32	A628 1851	Feed-in Clutch Ass'y	1
33	A628 1855	Feed-in Clutch Bracket	1
34	AA08 0075	Bushing - 8mm	1
35	A628 1225	Bushing - 8mm	1

Index No.	Part No.	Description	Q'ty Per Assembly
36	5053 0447	Bushing - 6mm	1
37	A628 1595	Spring Holder	1
38	A628 1596	Left Transport Roller Spring	1
39	A628 5735	Relay Harness - ORIGINAL WIDTH SENS	1
40	A628 1247	Cushion - Pick-up Roller Holder	1
42	A628 1163	Cushion - Original Entrance Guide	1
101	0720 0040B	Retaining Ring - M4	
102	0720 0060B	Retaining Ring - M6	
103	0632 0100	Parallel Pin - M2x10	
104	0720 0025E	Retaining Ring - M2.5	
105	0451 3006B	Tapping Screw - M3x6	
106	0720 0025B	Retaining Ring - M2.5	
107	0720 0030E	Retaining Ring - M3	
108	0453 3006B	Tapping Bind Screw - M3x6	
109	0807 5066	Washer - M8.1xM14x0.3	
110	0807 4072	Washer - Core	

3.Paper Exit Section (C578)

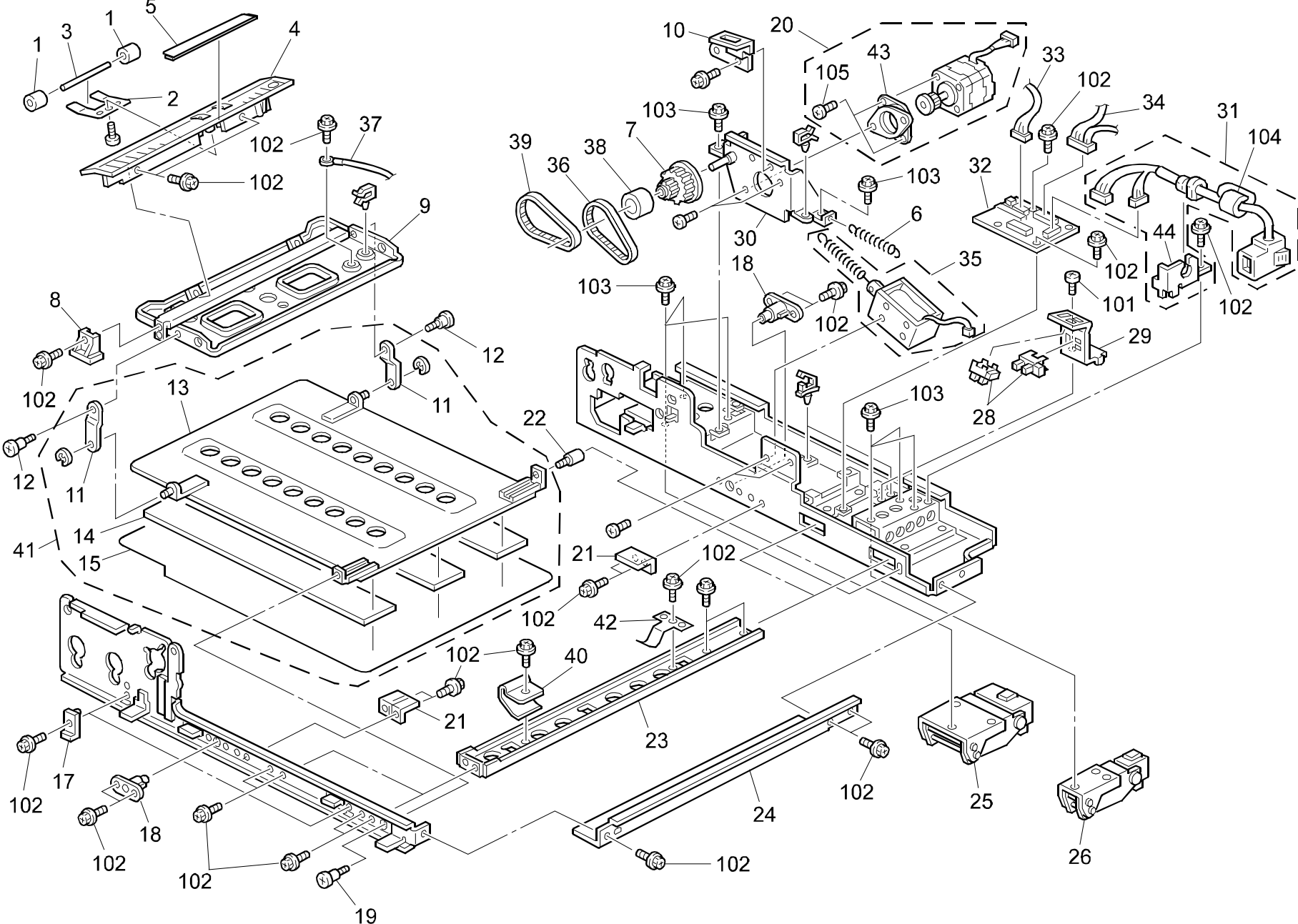


3.Paper Exit Section (C578)

Index No.	Part No.	Description	Q'ty Per Assembly
1	A628 1541	Pull Out Guide	1
2	A628 1149	Separation Guide	1
3	A628 1562	Right Transport Roller	1
4	5447 2681	Snap Ring	1
5	A628 1512	Separation Roller	1
6	A628 1542	Turn Guide Plate - Right	1
7	A628 1147	Brracket - Pull Out Roller	1
8	5053 0447	Bushing - 6mm	1
9	A134 2885	Torque Limitter	1
10	A628 1142	Bracket - Feed Roller	1
11	A628 1141	Left Stay	1
12	AW01 0066	Photosensor - PS-R50D1-B	1
13	A628 1144	Spring Plate - Guide - Expo Glass	1
14	A628 1551	Original Guide - Df Exposure Glass	1
15	AA14 3051	Shoulder Screw - M4	1
16	A628 1239	Shaft - Original Stopper	1
17	A628 1563	Upper Exit Roller	1
18	A628 1561	Upper Exit Guide	1
19	AA12 0032	Antistatic Brush	1
20	A628 1574	Lower Exit Guide	1
21	5936 2480	Magnet Catch Ass'y	1
22	A628 1566	Rear Bushing - Exit Roller	1
23	A628 5740	Relay Harness - Registration Sensor	1
24	A628 1585	Lower Exit Roller	1
25	A628 1565	Front Bushing - Exit Roller	1
26	A628 1136	Belt Tightener	1
27	A628 1837	Pulley - 20T	1
28	A628 1834	Timing Belt - 220MM	1
29	A628 1121	Stepped Screw - M4	1
30	A628 1119	Magnet Holder	1
31	A628 1833	Pulley - T42/T20	1
32	A628 1238	Lever - Original Stopper	1
33	A628 1117	Bracket - Cover Sensor	1
34	AW02 0075	Photointerrupter	1
35	A628 1126	Belt Tightner	1

Index No.	Part No.	Description	Q'ty Per Assembly
36	A607 2176	Exit Cover Magnet	1
37	A628 1515	Drive Shaft - Separation Roller	1
38	A628 1836	Gear - 20Z	1
39	A628 1835	Pulley - 30T	1
40	G010 1106	Exit Roller Spring	1
41	A628 1838	Timing Belt - 200MM	1
42	A590 2214	Screw - M3X5	1
101	0451 3006B	Tapping Screw - M3x6	
102	0720 0040B	Retaining Ring - M4	
103	0313 0120B	Philips Pan Head Screw - M3x12	
104	0741 3506	Ball Bearing - 6x12x4 mm	
105	0353 0060B	Philips Pan Head Screw - M3x6	
106	5447 2769	Stepped Screw	

4. Electrical Section (C578)

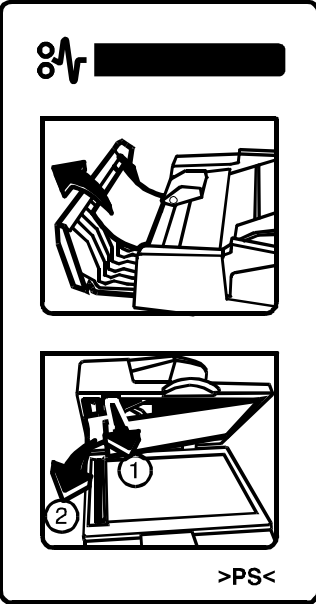

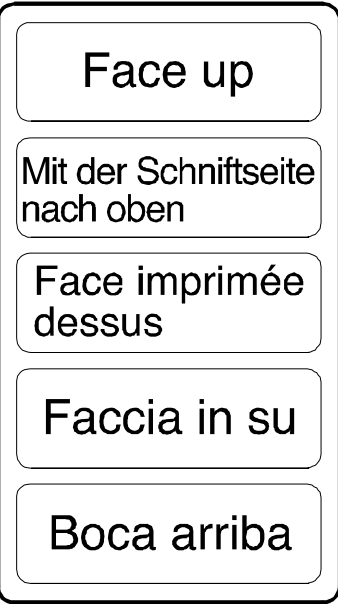
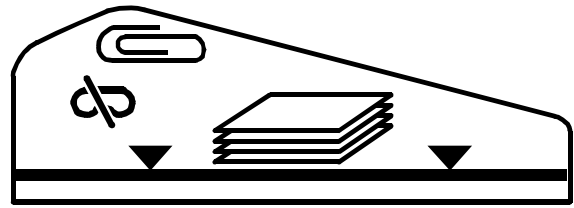


4.Electrical Section (C578)

Index No.	Part No.	Description	Q'ty Per Assembly
1	A628 1587	Right Transport Roller	1
2	A628 1586	Plate Spring - Lower Transport Guid	1
3	A628 1588	Right Transport Roller Shaft	1
4	A628 1521	Lower Exit Guide	1
5	A628 1517	Guide - Exit	1
6	A628 1229	Tension Spring - Stepper Motor	1
7	C229 6071	Timing Pulley - 63/20Z	1
8	A628 1532	Knob - Release Lever	1
9	A628 1523	Bracket - Platen Cover	1
10	C229 6061	Sensor Bracket	1
11	A628 1624	Link - Original Holder Bracket	1
12	C200 3115	Shoulder Screw - Sensor Actuator	1
13	A628 1613	Original Holder Bracket	1
14	A628 1614	Original Holder Pad	1
15	A628 1615	Original Holder Sheet	1
17	A628 1139	Stopper Plate	1
18	A628 1529	Stud - Platen Cover	1
19	AA14 3307	Stepped Screw - M3	1
20	C229 6062	Stepper Motor:ass'y	1
21	A628 1122	Support Bracket - Platen Sheet	1
22	AA14 3347	Lever Stopper Shaft	1
23	A628 1151	Middle Stay	1
24	A628 1152	Right Stay	1
25	A628 1172	Left Hinge Ass'y	1
26	A628 1171	Right Hinge Ass'y	1
28	AW02 0075	Photointerrupter	1
29	A628 1129	Bracket - Df Position Sensor	1
30	C229 6068	Motor Bracket	1
31	C229 5278	Stay - ADF	1
32	A628 5500	DF Control Board	1
33	A628 5720	Harness - Df Main Motor	1
34	A628 5725	Sensor Harness	1
35	A628 1231	Feed Belt Solenoid	1
36	C229 6075	Timing Belt - S2M148	1
37	A628 5745	Grounding Wire	1

Index No.	Part No.	Description	Q'ty Per Assembly
38	A628 1829	Collar - 9 X 15 X 3	1
39	C229 6076	Timing Belt - S2M160	1
40	A661 1153	Ground Plate:pressure Plate	1
41	A628 1611	Original Holder Sheet Ass'y	1
42	A628 1153	Grounding Plate	1
43	A548 2113	Motor Cushion	1
44	A628 1154	Bracket - Harness Clamp	1
101	0314 0060B	Philips Pan Head Screw - M4x6	
102	0451 3006B	Tapping Screw - M3x6	
103	0451 4006B	Tapping Screw - 4x6	
104	1607 0912	Ferrite Core : TR-25-15-12	
105	0313 0050B	Philips Pan Head Screw - M3x5	

5.Decal And Document (C578)

<p>1</p>  <p>>PS<</p>	<p>2</p> 	<p>3</p>  <p>Face up</p> <p>Mit der Schriftseite nach oben</p> <p>Face imprimée dessus</p> <p>Faccia in su</p> <p>Boca arriba</p>	<p>4</p> 
---	---	---	--

5.Decal And Document (C578)

Index No.	Part No.	Description	Q'ty Per Assembly
1	A628 6031	Jam Removal Decal	1
2	A628 6021	Original Size Decal	1
3	A628 6041	Decal - Original Tray	1
4	A610 6051	Decal - Document Set	1

Index No.	Part No.	Description	Q'ty Per Assembly

PARTS INDEX

Part No.	Description	Page and Index No.
AA08 0075	Bushing - 8mm	5- 34
AA12 0032	Antistatic Brush	7- 19
AA14 3051	Shoulder Screw - M4	7- 15
AA14 3307	Stepped Screw - M3	9- 19
AA14 3347	Lever Stopper Shaft	9- 22
AC01 3004	Exposure Glass	3- 25
AW01 0066	Photosensor - PS-R50D1-B	7- 12
AW01 0074	Photo Refiection Sensor:PS-R11D1-E	3- 18
AW02 0075	Photointerrupter	9- 28
AW02 0075	Photointerrupter	7- 34
AW02 0075	Photointerrupter	5- 30
C200 3115	Shoulder Screw - Sensor Actuator	9- 12
C229 5276	Ground Wire:Bracket:Hinge:Ass'y	3- 27
C229 5278	Stay - ADF	9- 31
C229 6061	Sensor Bracket	9- 10
C229 6062	Stepper Motor:ass'y	9- 20
C229 6068	Motor Bracket	9- 30
C229 6071	Timing Pulley - 63/20Z	9- 7
C229 6075	Timing Belt - S2M148	9- 36
C229 6076	Timing Belt - S2M160	9- 39
G010 1106	Exit Roller Spring	7- 40

Part No.	Description	Page and Index No
A134 2885	Torque Limiter	7- 9
A193 1759	Stepped Sctew	3- 45
A376 4599	Side Fence Pad	3- 46
A548 2113	Motor Cushion	9- 43
A565 1172	Sensor Actuator	3- 22
A565 2161	Side Fence	3- 14
A590 2214	Screw - M3X5	7- 42
A607 2176	Exit Cover Magnet	7- 36
A610 6051	Decal - Document Set	3- 37
A610 6051	Decal - Document Set	11- 4
A628 1117	Bracket - Cover Sensor	7- 33
A628 1119	Magnet Holder	7- 30
A628 1121	Stepped Screw - M4	7- 29
A628 1122	Support Bracket - Platen Sheet	9- 21
A628 1126	Belt Tightner	7- 35
A628 1129	Bracket - Df Position Sensor	9- 29
A628 1136	Belt Tightener	7- 26
A628 1139	Stopper Plate	9- 17
A628 1141	Left Stay	7- 11
A628 1142	Bracket - Feed Roller	7- 10
A628 1144	Spring Plate - Guide - Expo Glass	7- 13
A628 1147	Brracket - Pull Out Roller	7- 7
A628 1149	Separation Guide	7- 2
A628 1151	Middle Stay	9- 23
A628 1152	Right Stay	9- 24
A628 1153	Grounding Plate	9- 42
A628 1154	Bracket - Harness Clamp	9- 44
A628 1161	Upper Stay	5- 31
A628 1163	Cushion - Original Entrance Guide	5- 42
A628 1171	Right Hinge Ass'y	9- 26
A628 1172	Left Hinge Ass'y	9- 25
A628 1174	Right Ground Palte - Hinge Bracket	3- 39
A628 1177	Left Ground Plate - Hinge Bracket	3- 40
A628 1178	Df Baracket Cushion	3- 38
A628 1181	Lower Right Stay	5- 27

Part No.	Description	Page and Index No.
A628 1184	Shut - Pull Out Roller	5- 26
A628 1187	Lower Transport Guide	5- 28
A628 1188	Seal - Lower Transport Guide	5- 29
A628 1211	Holder - Belt Drive Roller	5- 14
A628 1212	Shaft - Belt Guide Roller	5- 16
A628 1213	Belt Guide Roller	5- 17
A628 1214	Belt Drive Roller	5- 13
A628 1215	Spring - Belt Guide Roller	5- 15
A628 1216	Spring - Belt Drive Shaft	5- 10
A628 1218	Front Guide Plate	5- 11
A628 1219	Rear Guide Plate	5- 21
A628 1220	Bushing - 8mm	5- 20
A628 1221	Gear - 22Z	5- 19
A628 1222	Drive Roller Shaft	5- 22
A628 1225	Bushing - 8mm	5- 35
A628 1229	Tension Spring - Stepper Motor	9- 6
A628 1231	Feed Belt Solenoid	9- 35
A628 1238	Lever - Original Stopper	7- 32
A628 1239	Shaft - Original Stopper	7- 16
A628 1241	Pick-up Roller	5- 6
A628 1242	Pick-up Roller Shaft	5- 3
A628 1243	Pick-up Roller Holder	5- 4
A628 1244	Pulley - 20T	5- 8
A628 1245	Pulley And Gear - 20T/22Z	5- 2
A628 1246	Gear - 22Z	5- 1
A628 1247	Cushion - Pick-up Roller Holder	5- 40
A628 1248	Timing Belt - 118MM	5- 9
A628 1249	Joint - Pick-up Roller	5- 7
A628 1251	Anti-vibration Weight	3- 30
A628 1257	Original Feed Belt	5- 18
A628 1261	Original Entrance Guide	3- 9
A628 1262	Pad - Original Entrance Guide	3- 10
A628 1512	Separation Roller	7- 5
A628 1515	Drive Shaft - Separation Roller	7- 37
A628 1517	Guide - Exit	9- 5

Part No.	Description	Page and Index No.
A628 1521	Lower Exit Guide	9- 4
A628 1523	Bracket - Platen Cover	9- 9
A628 1529	Stud - Platen Cover	9- 18
A628 1532	Knob - Release Lever	9- 8
A628 1541	Pull Out Guide	7- 1
A628 1542	Turn Guide Plate - Right	7- 6
A628 1551	Original Guide - Df Exposure Glass	7- 14
A628 1561	Upper Exit Guide	7- 18
A628 1562	Right Transport Roller	7- 3
A628 1563	Upper Exit Roller	7- 17
A628 1565	Front Bushing - Exit Roller	7- 25
A628 1566	Rear Bushing - Exit Roller	7- 22
A628 1574	Lower Exit Guide	7- 20
A628 1585	Lower Exit Roller	7- 24
A628 1586	Plate Spring - Lower Transport Guide	9- 2
A628 1587	Right Transport Roller	9- 1
A628 1588	Right Transport Roller Shaft	9- 3
A628 1591	Left Transport Roller Shaft	5- 24
A628 1592	Left Transport Roller	5- 25
A628 1594	Left Transport Roller Holder	5- 23
A628 1595	Spring Holder	5- 37
A628 1596	Left Transport Roller Spring	5- 38
A628 1611	Original Holder Sheet Ass'y	9- 41
A628 1613	Original Holder Bracket	9- 13
A628 1614	Original Holder Pad	9- 14
A628 1615	Original Holder Sheet	9- 15
A628 1624	Link - Original Holder Bracket	9- 11
A628 1829	Collar - 9 X 15 X 3	9- 38
A628 1833	Pulley - T42/T20	7- 31
A628 1834	Timing Belt - 220MM	7- 28
A628 1835	Pulley - 30T	7- 39
A628 1836	Gear - 20Z	7- 38
A628 1837	Pulley - 20T	7- 27
A628 1838	Timing Belt - 200MM	7- 41
A628 1851	Feed-in Clutch Ass'y	5- 32

Part No.	Description	Page and Index No.
A628 1855	Feed-in Clutch Bracket	5- 33
A628 2111	Front Cover	3- 23
A628 2121	Upper Cover	3- 20
A628 2131	Left Cover	3- 1
A628 2141	Original Table	3- 16
A628 2151	Side Fence Guide	3- 15
A628 2161	Original Table Cover	3- 19
A628 2163	Original Table Bracket	3- 12
A628 2167	Fixing Bracket - Original Table	3- 11
A628 2170	Clock Lever - Left Cover	3- 36
A628 2171	Fixing Bracket - Left Cover	3- 8
A628 2174	Front Cover Hinge	3- 3
A628 2175	Rear Magnet Catch	3- 7
A628 2176	Front Magnet Catch	3- 4
A628 2177	Feeler - Paper Size Detection	3- 5
A628 2178	Feeler Bracket - Paper Size Detecti	3- 6
A628 2179	Registration Sensor Shield	3- 35
A628 2186	Driven Roller - Pull Out	3- 33
A628 2188	Rear : Spring Plate : Pull Out	3- 34
A628 2211	Rear Guide Plate	3- 28
A628 3111	Shoulder Screw - M5	3- 24
A628 3112	Shielding Sheet	3- 44
A628 3115	Knob Screw - M4	3- 13
A628 3192	Original Scale - LT	3- 26
A628 5500	DF Control Board	9- 32
A628 5720	Harness - Df Main Motor	9- 33
A628 5725	Sensor Harness	9- 34
A628 5730	Relay Harness - Original Length Sensor	3- 17
A628 5735	Relay Harness - ORIGINAL WIDTH SENS	5- 39
A628 5740	Relay Harness - Registration Sensor	7- 23
A628 5745	Grounding Wire	9- 37
A628 6021	Original Size Decal	3- 2
A628 6021	Original Size Decal	11- 2
A628 6031	Jam Removal Decal	3- 31
A628 6031	Jam Removal Decal	11- 1

Part No.	Description	Page and Index No
A628 6041	Decal - Original Tray	3- 32
A628 6041	Decal - Original Tray	11- 3
A661 1153	Ground Plate:pressure Plate	9- 40
A661 1173	Bracket:hinge	3- 21
A661 2172	Bracket - Feeler Original	3- 43
A661 2173	Feeler - Original Feed	3- 42

Part No.	Description	Page and Index No.
5053 0447	Bushing - 6mm	5- 36
5053 0447	Bushing - 6mm	7- 8
5206 2686	Snap Ring	5- 5
5215 2621	Snap Ring - M6	5- 12
5446 2824	Screw - Duplex Guide Plate	3- 29
5447 2681	Snap Ring	7- 4
5447 2769	Stepped Screw	7-106
5936 2480	Magnet Catch Ass'y	7- 21

Part No.	Description	Page and Index No
0313 0050B	Philips Pan Head Screw - M3x5	9-105
0313 0120B	Philips Pan Head Screw - M3x12	7-103
0314 0060B	Philips Pan Head Screw - M4x6	3-102
0314 0060B	Philips Pan Head Screw - M4x6	9-101
0353 0060B	Philips Pan Head Screw - M3x6	7-105
0353 0060F	Philips Truss Head Screw - M3x6	3-101
0434 0122B	Tapping Screw - M4x12	3-103
0451 3006B	Tapping Screw - M3x6	9-102
0451 3006B	Tapping Screw - M3x6	5-105
0451 3006B	Tapping Screw - M3x6	3-106
0451 3006B	Tapping Screw - M3x6	7-101
0451 4006B	Tapping Screw - 4x6	9-103
0452 3008	Tapping Bind Screw - M3x8	3-107
0453 3006B	Tapping Bind Screw - M3x6	5-108
0453 3006Z	Tapping Screw - M3x6	3-104
0632 0100	Parallel Pin - M2x10	5-103
0720 0025B	Retaining Ring - M2.5	5-106
0720 0025E	Retaining Ring - M2.5	5-104
0720 0030E	Retaining Ring - M3	5-107
0720 0040B	Retaining Ring - M4	7-102
0720 0040B	Retaining Ring - M4	5-101
0720 0060B	Retaining Ring - M6	5-102
0741 3506	Ball Bearing - 6x12x4 mm	7-104
0802 5255	Tapping Screw - M3x8	3-105
0807 4072	Washer - Core	5-110
0807 5066	Washer - M8.1xM14x0.3	5-109
1607 0912	Ferrite Core : TR-25-15-12	9-104